



PREMIUM POWER P R O D U C T S

1st and 2nd Generation Internal Battery *For iPod®*

The instructions below come with no warranty or guarantee. Improper assembly or use of excessive force may result in damage to your iPod®. The buyer assumes full responsibility for damages or problems caused by use of these instructions. Installing this battery requires a moderate level of technical ability and proficiency in the use of hand tools as well as a general understanding of electronic components.



Step 1

Starting with the top corner, pry open the case with the included 4-way multi-screwdriver (use the smallest, flat-head screwdriver).



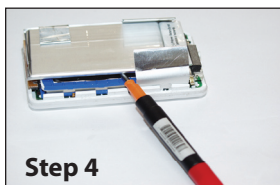
Step 2

Carefully work towards the bottom of the iPod® with the tool wedged inside the case, undoing the case clips as you go.



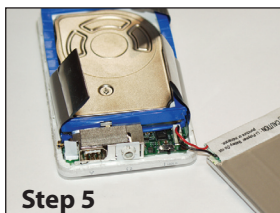
Step 3

With one side of the case fully unclipped, carefully lift the case cover away from the main body of the iPod®.



Step 4

Using the tool, pry the old battery from its glued position in the iPod®. The battery should now be connected only by its power cord. **Please pay attention to the original orientation of the battery in the case to make replacement easier.**



Step 5

Gently pull on the power cable to disconnect it from the iPod®. Do not remove the rubber pad from the iPod® that supports the battery. You can now plug in the new battery, secure it to the original glue spots and snap the case back on.

Your new battery will need a minimum of three hours charge time before its first use.

iPod® is a trademark of Apple Computer Inc.

